



Starting a Pollinator Garden

1. Make sure your garden gets a lot of sun.

Most pollinator plants need at least six hours of sun each day.

2. Plant host plants for butterflies to lay their eggs on and for caterpillars to eat.

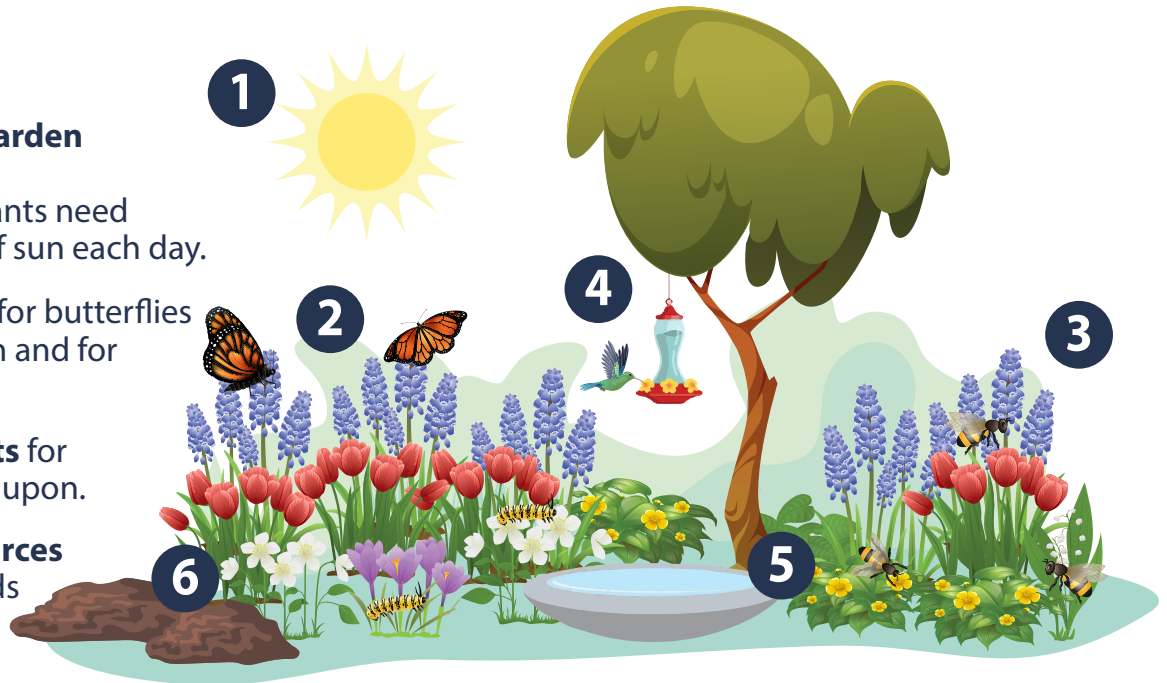
3. Plant nectar plants for pollinators to feed upon.

4. Include water sources like puddling ponds so butterflies and bees can drink.

5. Add a hummingbird feeder and fill with homemade nectar water.

(Mix ¼ cup refined white sugar with one cup boiling water, let cool, and add to feeder.)

6. Do not use pesticides.



Pollinator Nectar Plants

* indicates native Michigan/Upper Midwest plants

PERENNIALS — regrow every season



- Anise Hyssop* (*Agastache spp.*)
- Wild Bergamot* (*Monarda fistulosa*)
- Lavender (*Lavandula spp.*)
- Purple Coneflower* (*Echinacea*)



- Scarlet Bee Balm* (*Monarda didyma*)
- Cardinal Flower* (*Lobelia cardinalis*)
- Foxglove Penstemon (*Penstemon digitalis*)
- Red Columbine* (*Aquilegia canadensis*)



- Butterfly Weed* (*Asclepias tuberosa*)
- Blazingstar* (*Liatris spp.*)
- Aster* (*Symphyotrichum spp.*)
- Garden Phlox* (*Phlox paniculata*)
- Swamp Milkweed* (*Asclepias incarnata*)

ANNUALS — only live for one growing season

- Cosmos (*Cosmos bipinnatus*)
- Zinnia (*Zinnia elegans*)
- Lantana (*Lantana camara*)
- Verbena (*Verbenaceae spp.*)
- Mexican Sunflower (*Tithonia diversifolia*)
- Pentas (*Pentas lanceolata*)

Butterfly Host Plants

Monarch	Milkweed (<i>Asclepias spp.</i>) such as Swamp or Common Milkweed, Butterfly Weed
Black Swallowtail	Parsley, Dill, Fennel, carrot tops
Red Admiral, Question Mark, Eastern Comma	False Nettle (<i>Boehmeria cylindrica</i>)
American Lady	Sweet or Pearly Everlasting (<i>Gnaphalium spp.</i>), Pussy-toes (<i>Antennaria spp.</i>)
Painted Lady	Thistles (<i>Cirsium spp.</i>), Mallows (<i>Malva spp.</i>), Hollyhock (<i>Althaea rosea</i>)
Eastern Tiger Swallowtail	Wild Cherry (<i>Prunus pensylvanica</i>), Hop Tree (<i>Ptelea trifoliata</i>), Ash (<i>Fraxinus spp.</i>)
Spicebush Swallowtail	Spicebush (<i>Lindera benzoin</i>), Sassafras (<i>Sassafras albidum</i>)
Mourning Cloak	Birch (<i>Betula spp.</i>), Willow (<i>Salix spp.</i>), Aspen (<i>Populus spp.</i>), Elm (<i>Ulmus spp.</i>)
Viceroy	Willows (<i>Salix spp.</i>), Cottonwood (<i>Populus deltoides</i>)